



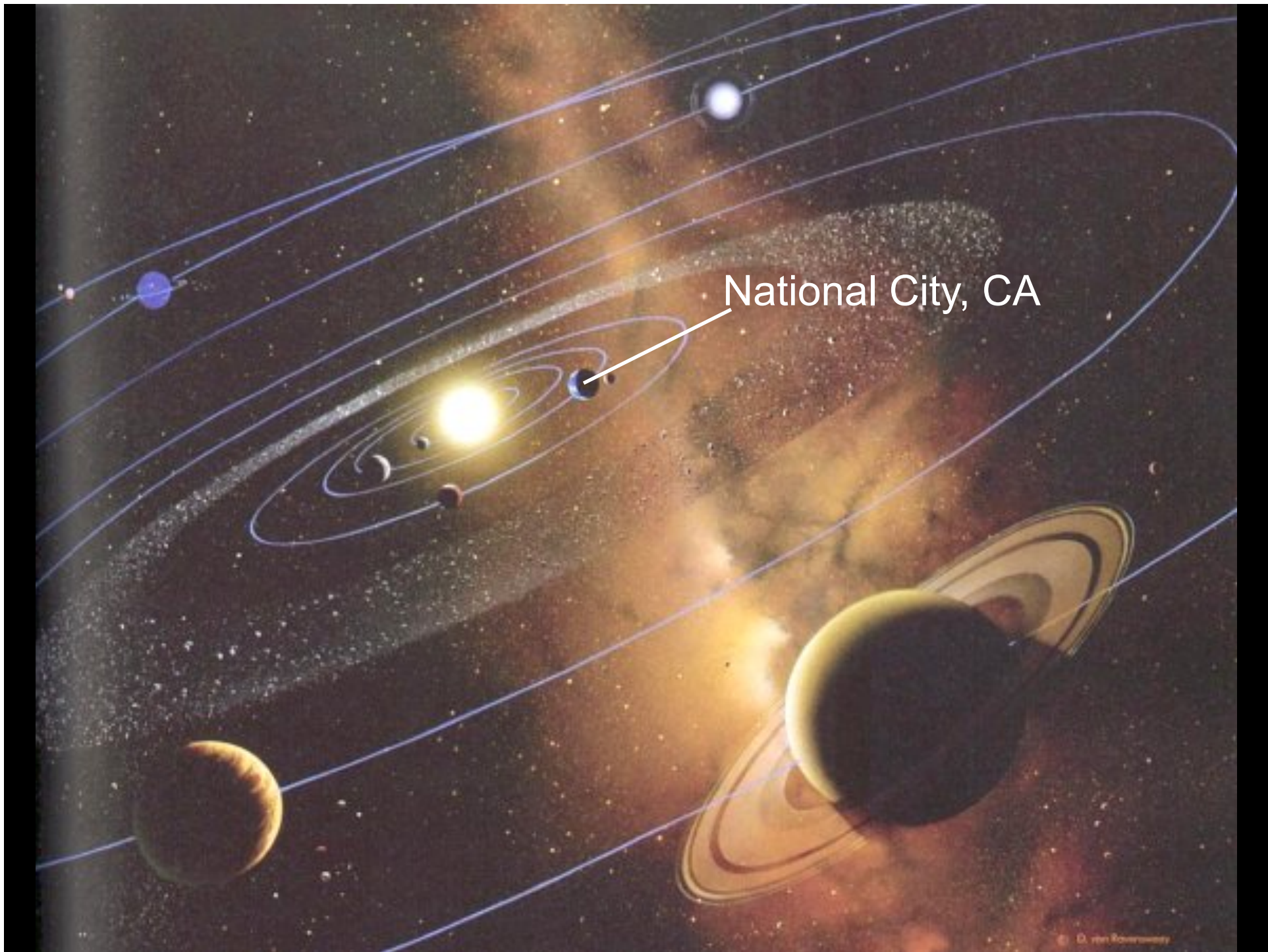
**Westside Infill
Transit Oriented Development
(WI-TOD)**

National City Staff

- Brad Raulston, Executive Director
Community Development Commission
- Patricia Beard, Redevelopment Manager
- Claudia Silva, City Attorney

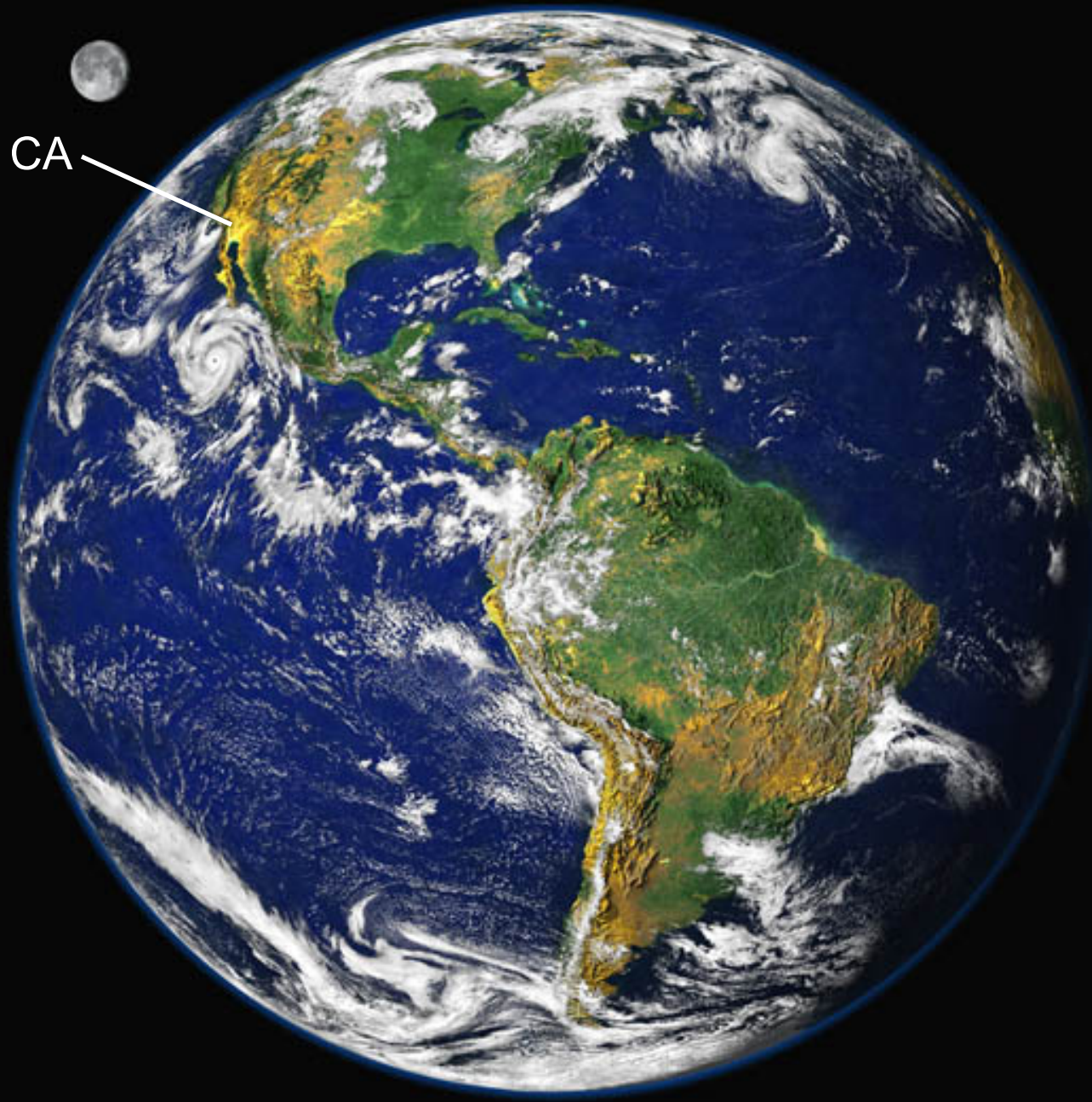
National City, CA



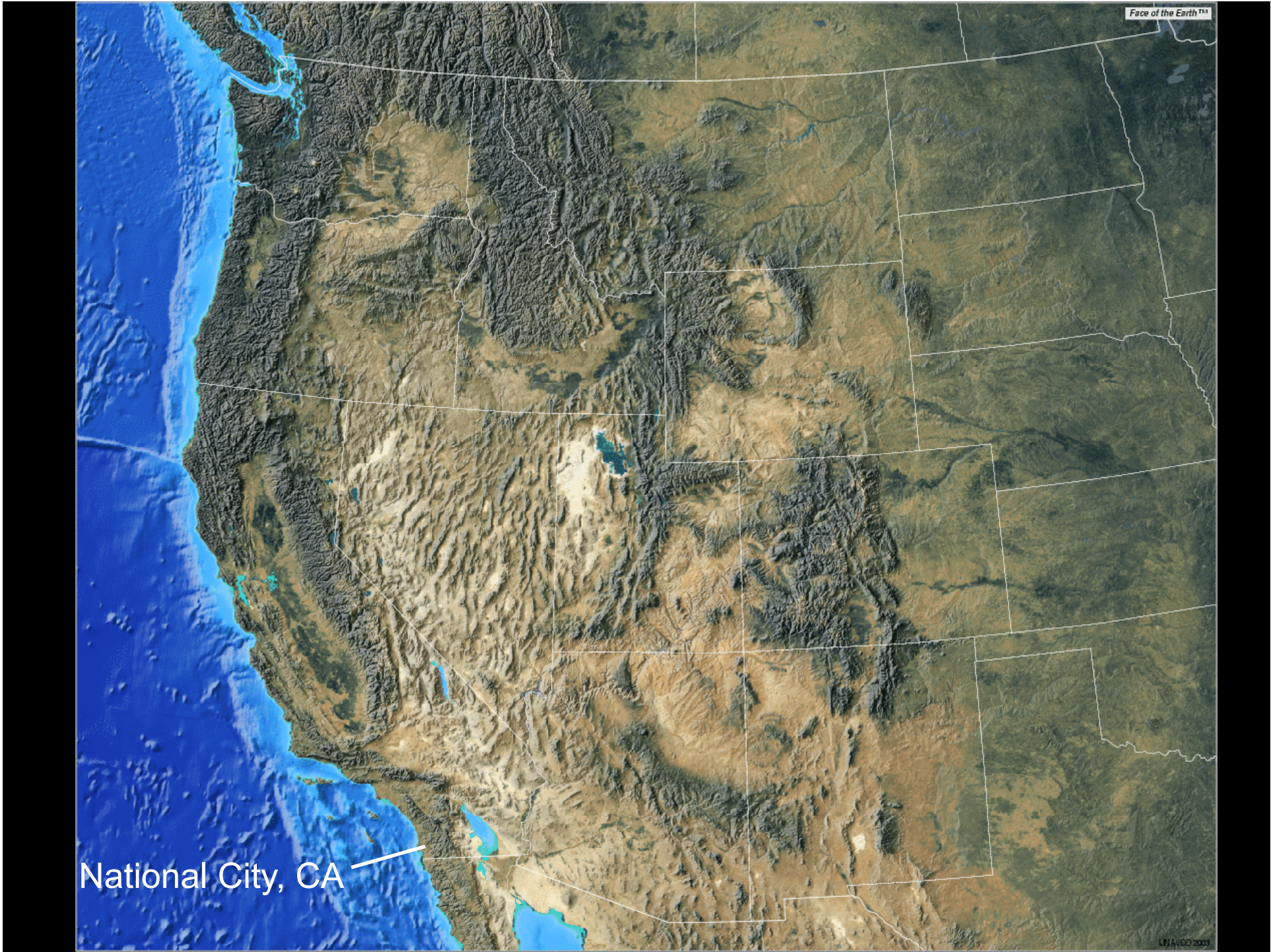


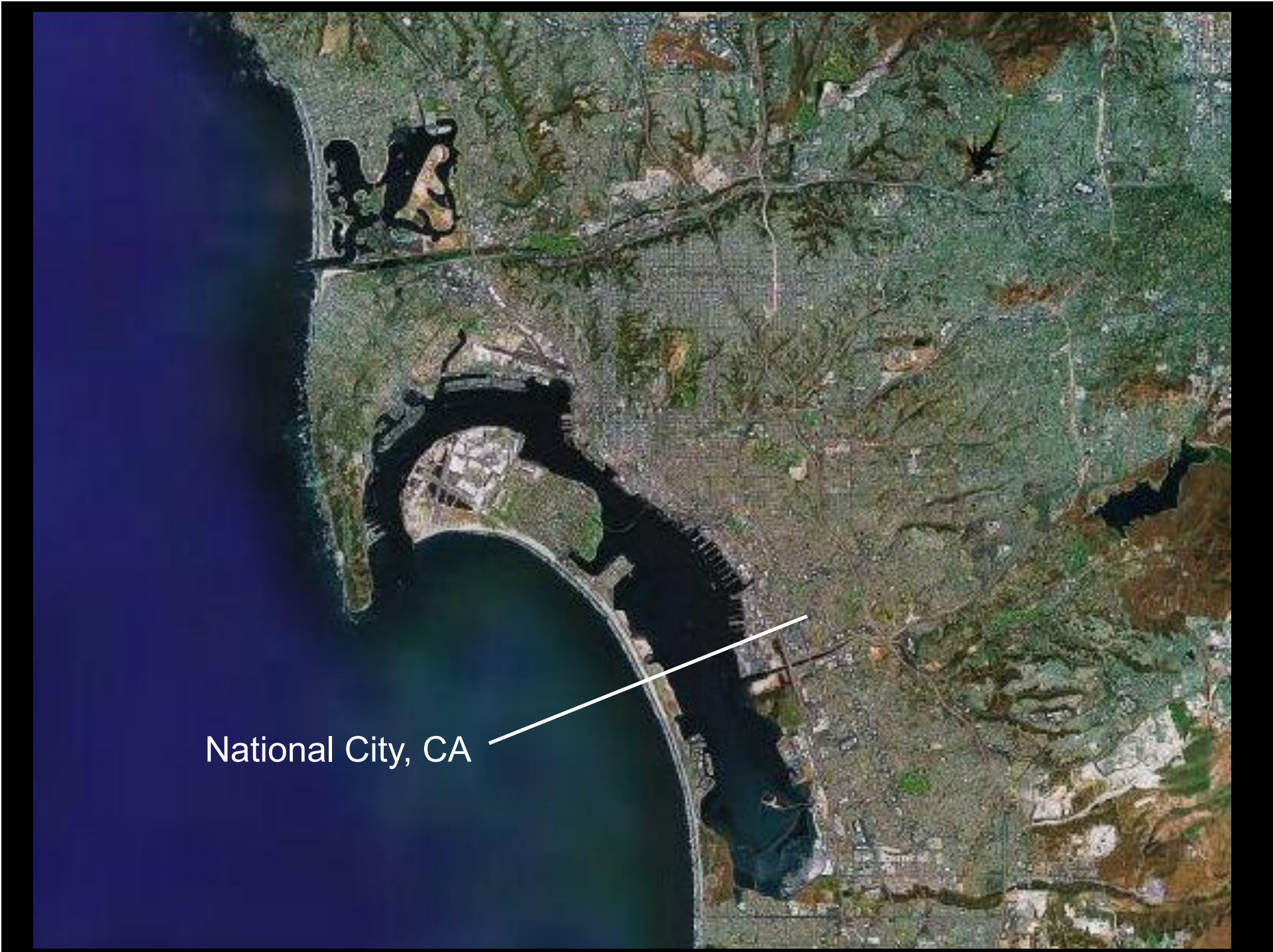
National City, CA

National City, CA



National City, CA





National City, CA



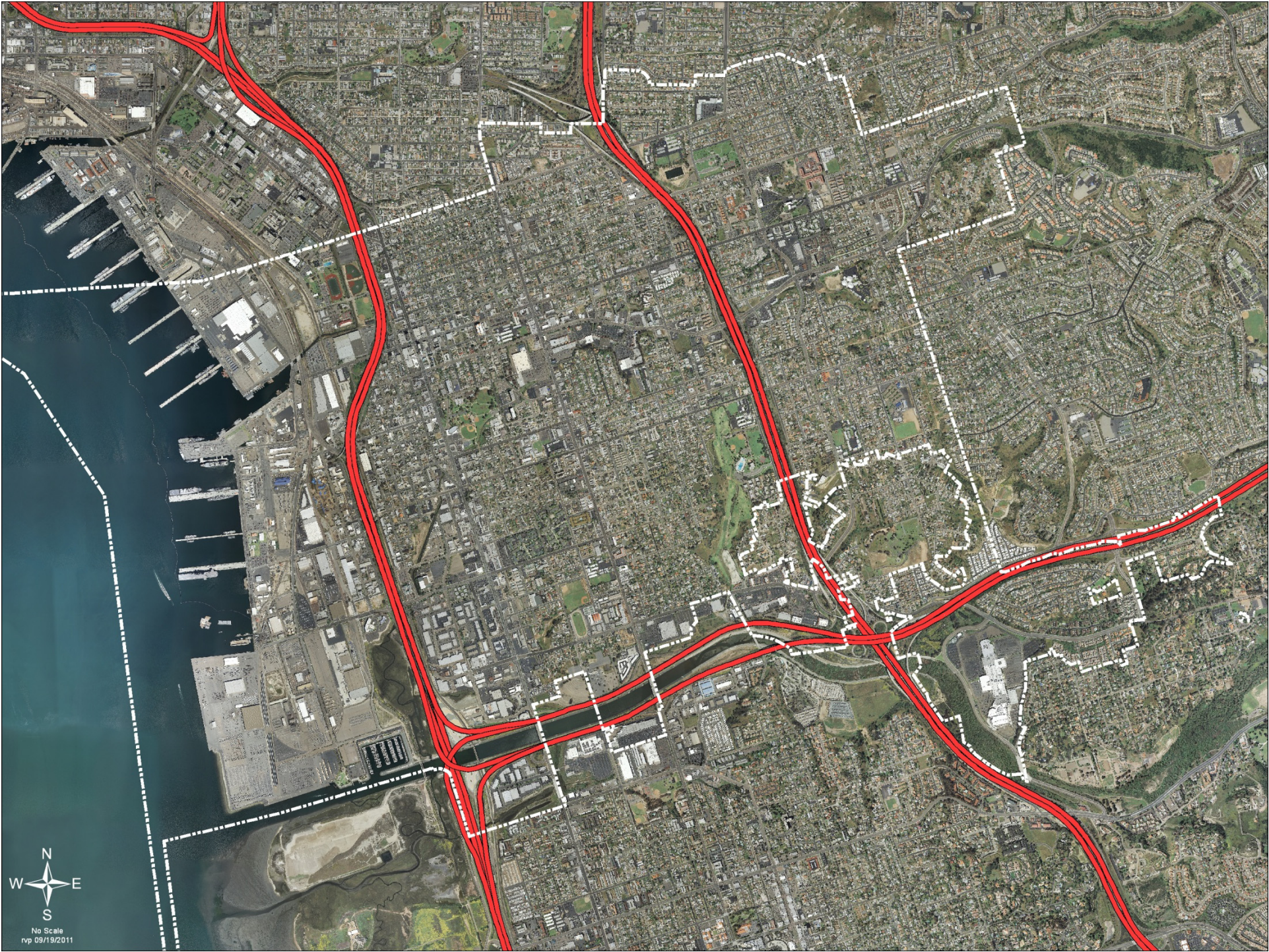
No Scale
rvp 09/19/2011

National City Overview

- Incorporated in 1887
- Population – 58,580
- 63% Hispanic, 17% Filipino
- 8,050 persons per square mile (12.54/ac)
- 3.41 persons per household
- 34% ownership vs. 54% county
- 33% of US median income



No Scale
rvp 09/19/2011



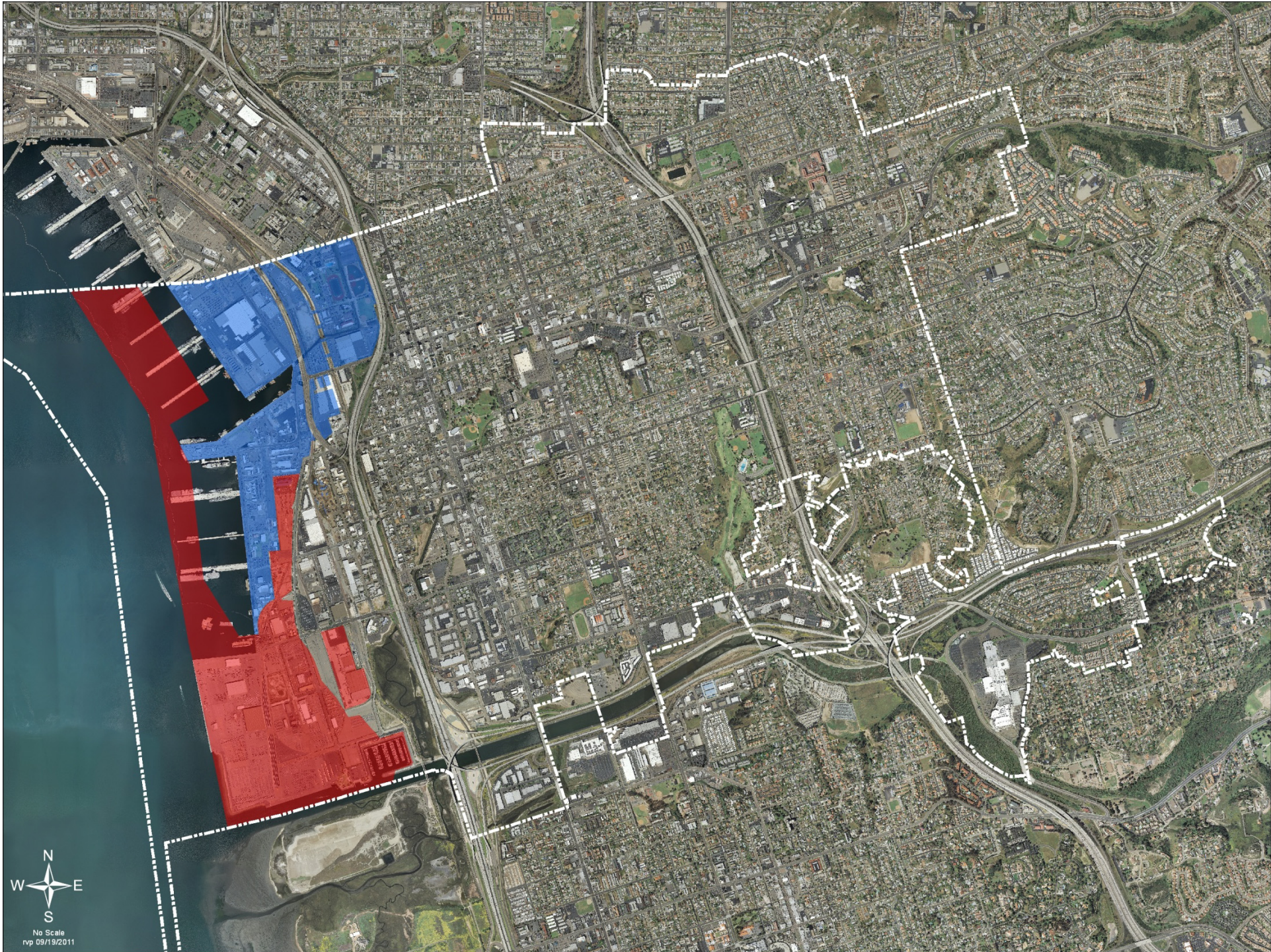
N
W E
S
No Scale
rvp 09/19/2011



No Scale
rvp 09/19/2011



No Scale
rvp 09/19/2011



No Scale
rvp 09/19/2011



No Scale
rvp 09/19/2011



No Scale
rvp 09/19/2011



No Scale
rvp 09/19/2011





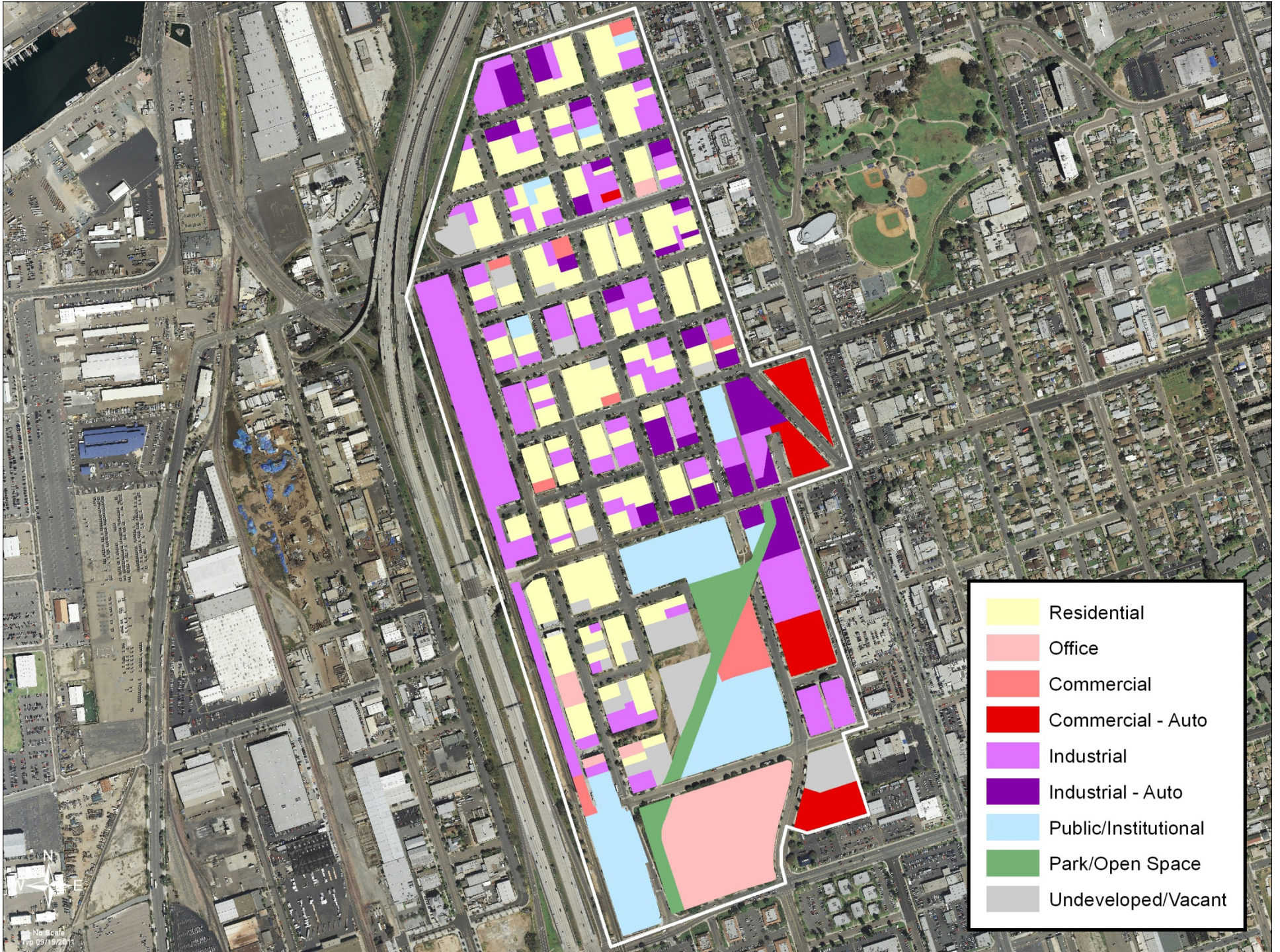
No Scale
rvp 09/19/2011



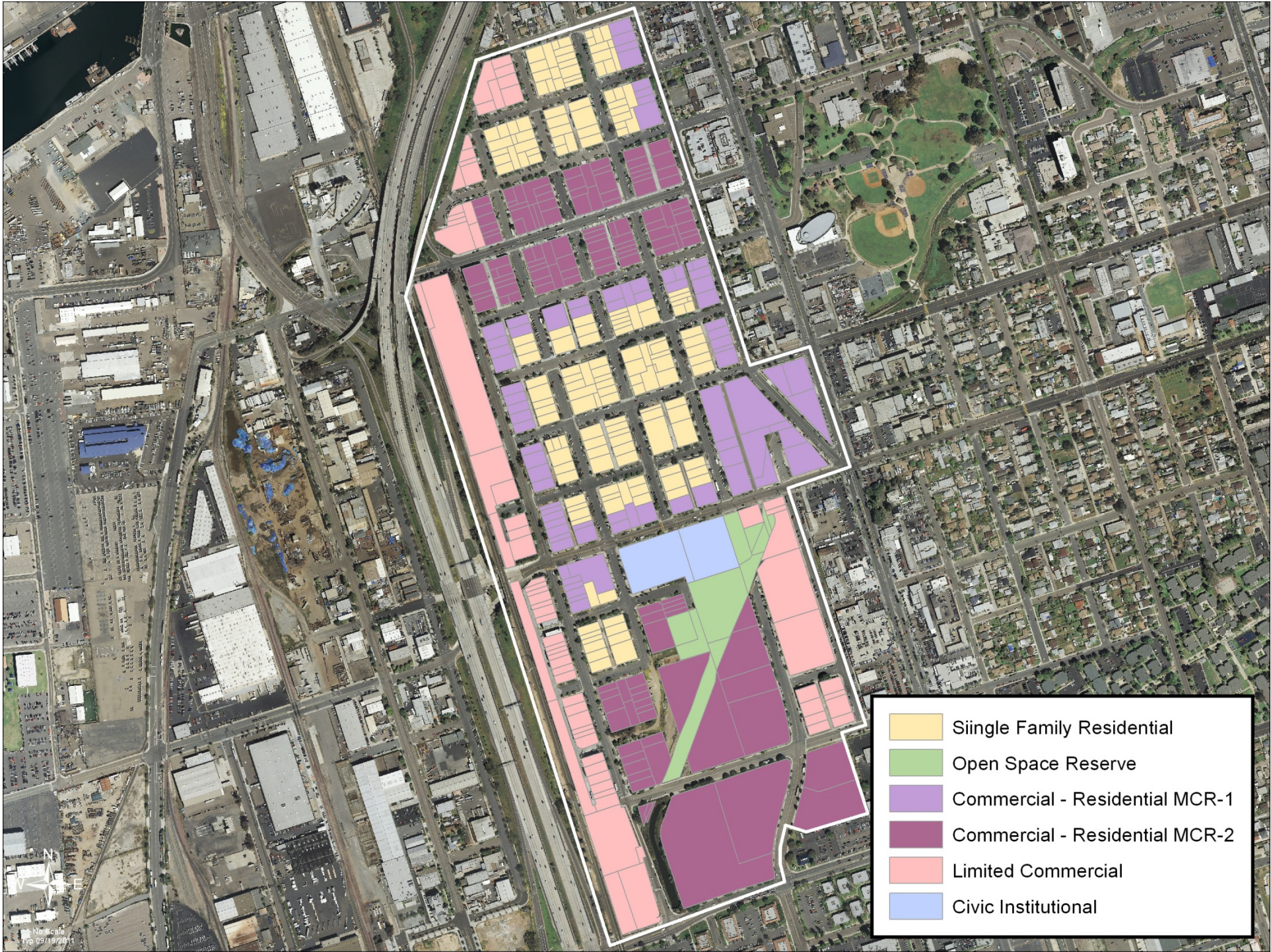
No Scale
rvp 09/19/2011



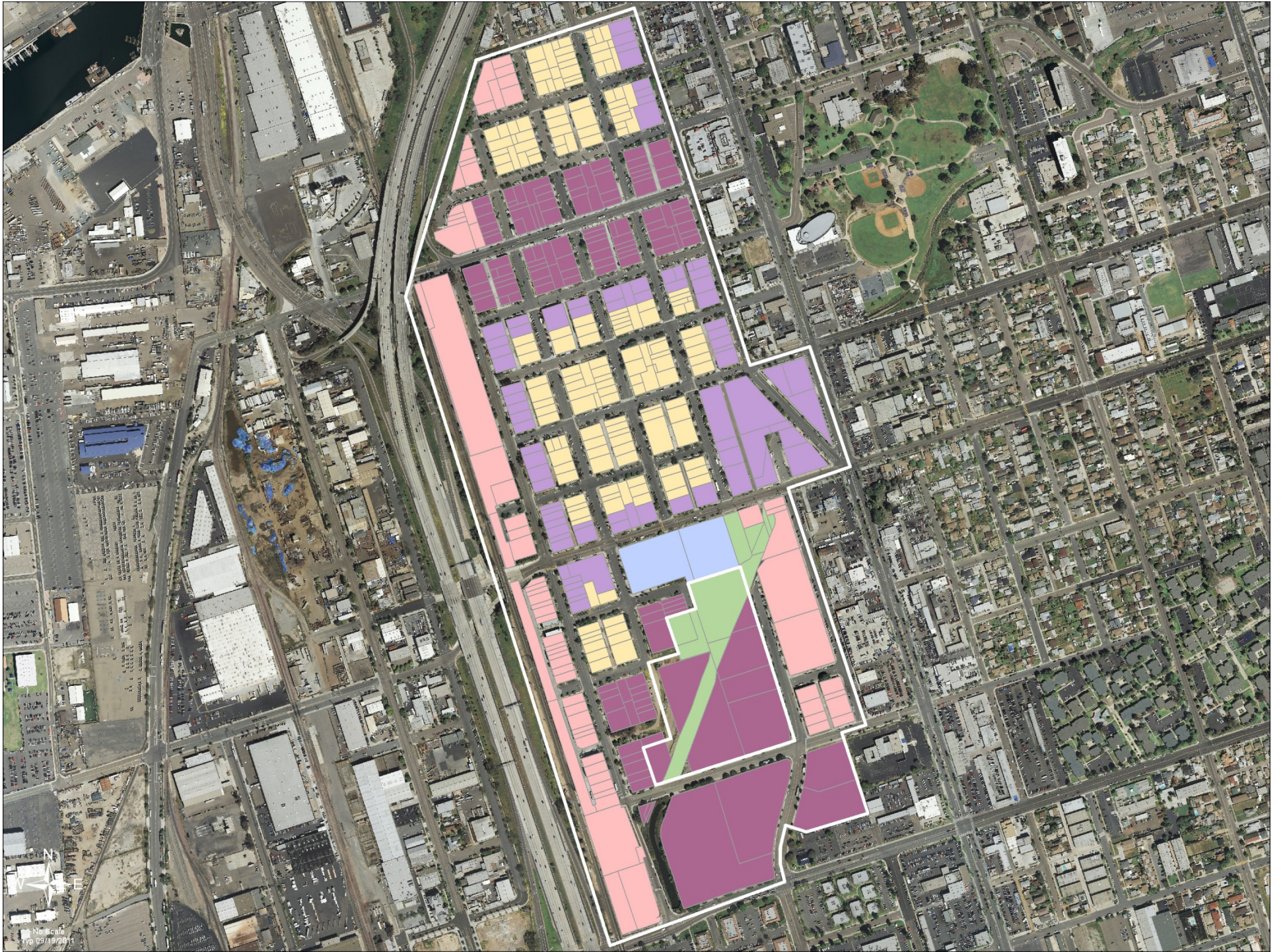




- Residential
- Office
- Commercial
- Commercial - Auto
- Industrial
- Industrial - Auto
- Public/Institutional
- Park/Open Space
- Undeveloped/Vacant



- Single Family Residential
- Open Space Reserve
- Commercial - Residential MCR-1
- Commercial - Residential MCR-2
- Limited Commercial
- Civic Institutional









N
W E
S
No Scale
09/19/2011

National City's Westside



Community Designed TOD

- 80+ community members
- Address issues of housing density, affordability, creating open space
- Resulted in project design used as basis for developer recruitment



Community Design Process



